

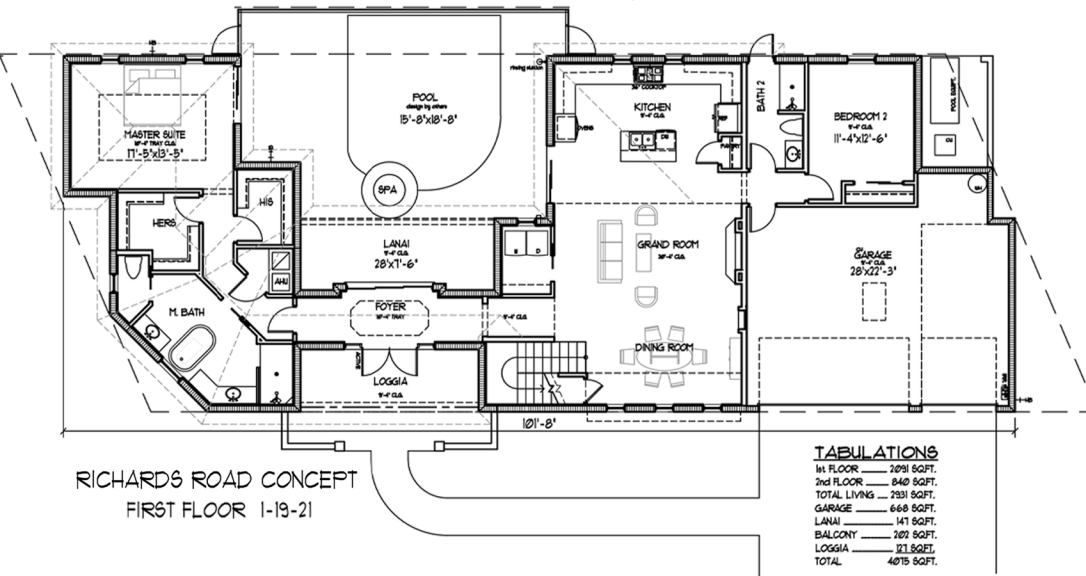
130 Richards Road - Melbourne Beach

starting at \$899,000

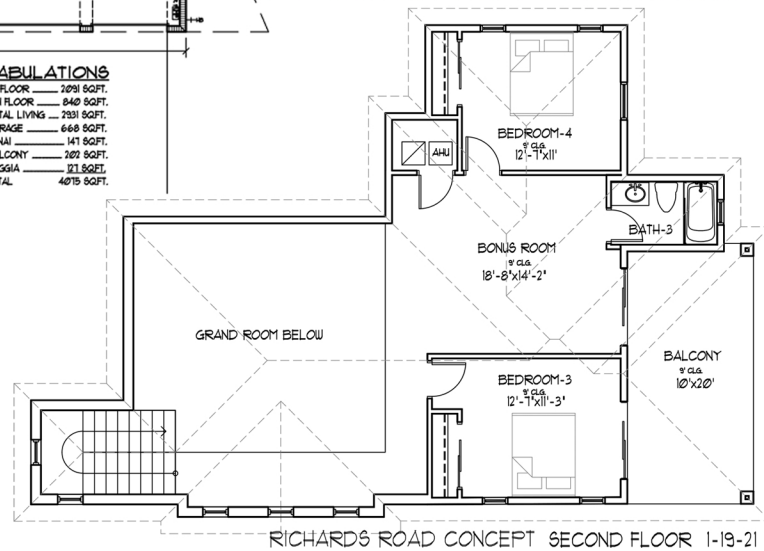
4 bedroom plus bonus room
3 bathroom | 3 car garage | private pool
2,931 sq ft under air | 4,075 sq ft total



RICHARDS ROAD CONCEPT
FRONT 1-19-21



TABULATIONS	
1st FLOOR	2098 SQFT.
2nd FLOOR	840 SQFT.
TOTAL LIVING	2931 SQFT.
GARAGE	668 SQFT.
LANAI	141 SQFT.
BALCONY	202 SQFT.
LOGGIA	211 SQFT.
TOTAL	4075 SQFT.



location

- Minutes from Downtown Melbourne Beach.
- Located in flood zone X - high and dry.
- Located across the street from the beach.
- Zoned for A rated schools.

custom features

- Custom wood cabinets with 36" uppers and crown molding, painted finish.
- Double paned, Low E vinyl framed windows. Impact rated glass.
- Concrete paver driveway and walkway.
- Metal roof.
- Stainless finish Samsung appliance package including dishwasher, built in range, cooktop, and microwave with hood exhaust to the outdoors.
- Private pool with optional spa.



Kelly Riese
Sales Manager
Monarch Homes
321-986-7371
kellysellsfl@gmail.com



www.monarchhomesofbrevard.com